

Optex Integration

User Guide

Custom Solutions

Genetec Professional Services Team

Innovative Solutions

Genetec

Table of Contents

1	Purpose	3
2	Document Reviews	3
3	Overview	3
4	Installation	3
4.1	Installing the Optex solution	3
4.2	Create the Optex plugin	5
5	Configuring the plugin	7
5.1	General properties page	7
5.2	Trigger rules	8
5.2.1	Information received from the device	8
5.2.2	Special characters	8
	a) ? Character	8
	b) * Character	8
	c) Space character	8
5.2.3	Priority	9
5.2.4	Reactivation	9
5.2.5	Trigger actions	9
5.3	Selecting the server that hosts the plugin	9
6	Assumptions	9
7	Licenses	9
8	Troubleshooting	10
8.1	Log files	10
9	Contacting Professional Services	10

1 Purpose

The purpose of this document is to describe the Optex integration for Security Center 5.2+. This solution the system to raise alarms, custom events and move PTZ cameras to predefined presets when the data coming from the Redscan device matches a certain pattern

2 Document Reviews

List of all changes made to this document.

Version	Name	Note	Date
1.0	Carlos Burin	Initial document	2011-11-19
1.1	Simon Levy	Updated	2012-05-17
1.2	François Digard	Updated	2014-01-30
1.3	Anne-Cécile Tournier	Contact and Part number modifications	2015-04-03
1.4	Anne-Cécile Tournier	Modification to add the supported readers	2016-07-20

3 Overview

The Optex solution integrates into various aspects of the Security Center 5.2+ ecosystem. The solution includes a plugin plus Config tool pages to configure the plugin.

4 Installation

The Optex solution requires to be installed in the computer running the Directory and also in each one of the client machines that will be used for configuring the system. The computer where the plugin is to be running has to be able to connect to the corresponding TCP or UDP port as specified in the configuration pages.

4.1 Installing the Optex solution

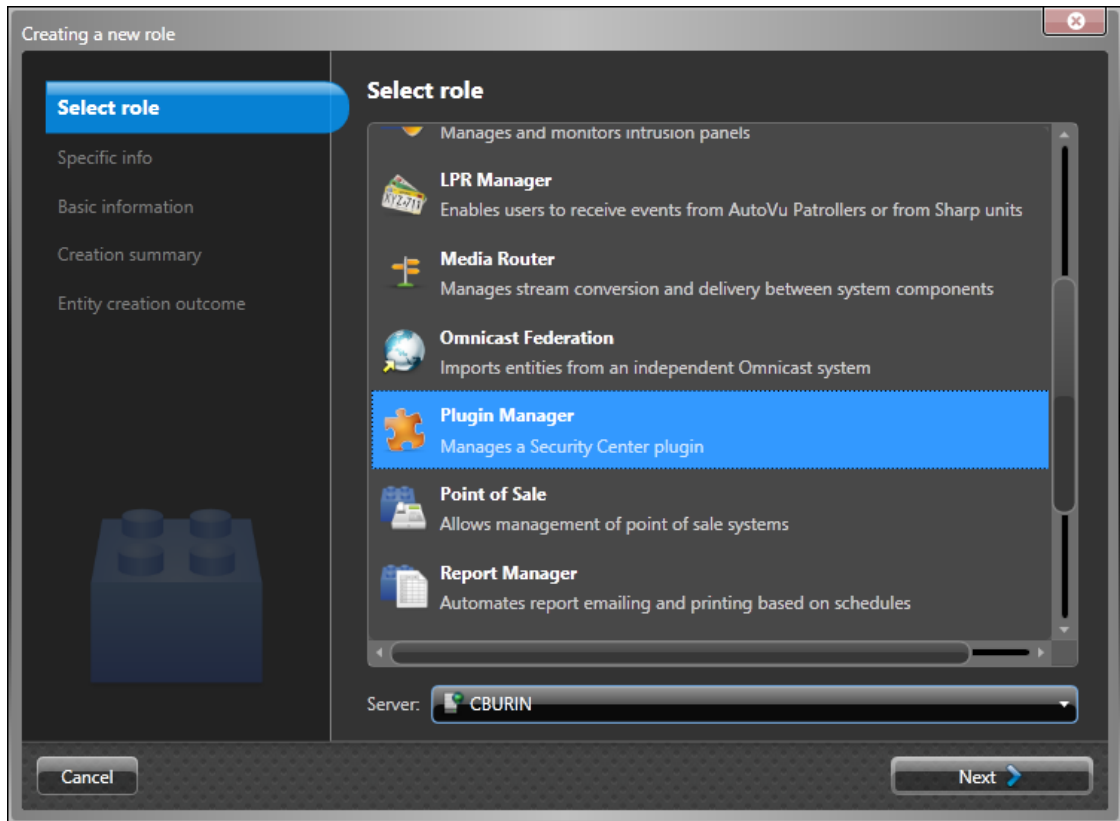
Execute the setup.exe application to properly install all the required files into your system

- Double click setup.exe
- Follow the steps indicated by the Installation wizard

- Once the installation finishes, restart the Genetec Server service (this step is only required when installing the solution in the computer running the directory). Restart the service manually and not through the Admin tool.

4.2 Create the Optex plugin

The Optex plugin is the central point of configuration for the solution. Creating the plugin is as straight forward as any other plugin in SC5.2+. Setting failover information for these plugins is not necessary.



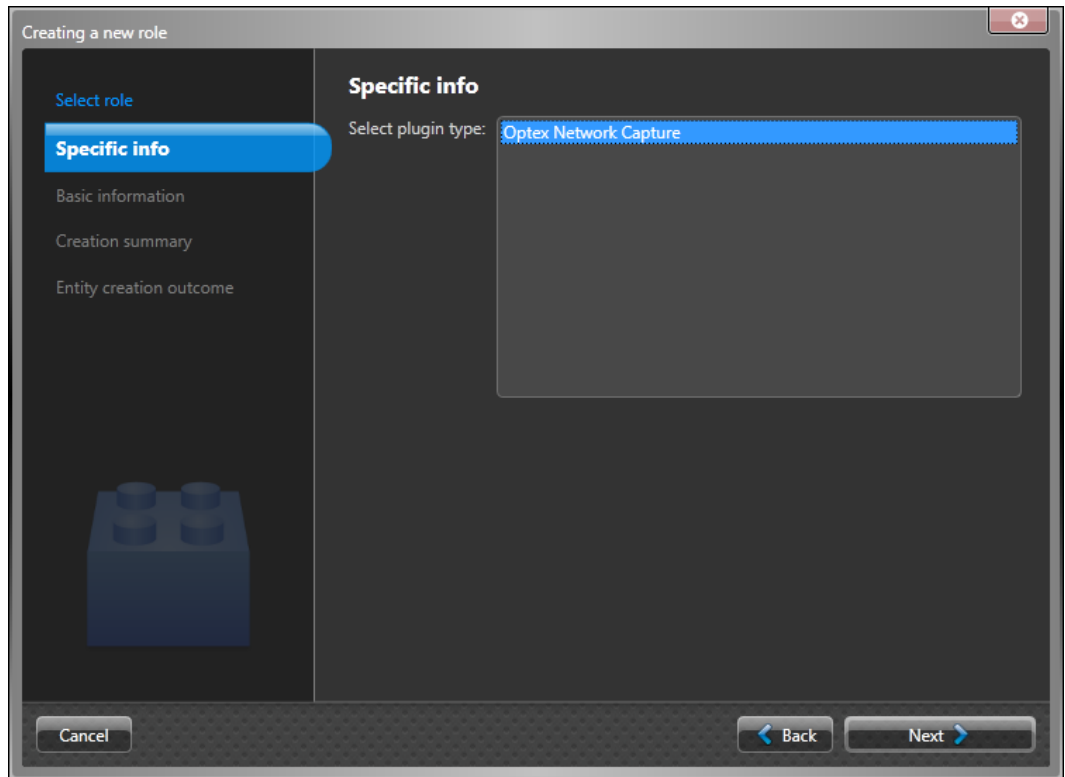
Note: this step needs to be performed after installing the solution in the computer running the Directory and in the local computer where the Config tool will be executed.

- Open Config Tool
- Go to Role view
- Add a new entity of type Role

From the list of different role types, select Plugin Manager

Selecting the role type in the wizard

- In the Role subtype, choose Optex Network Capture



Selecting the plugin type in the wizard

- Click next to finish with the process

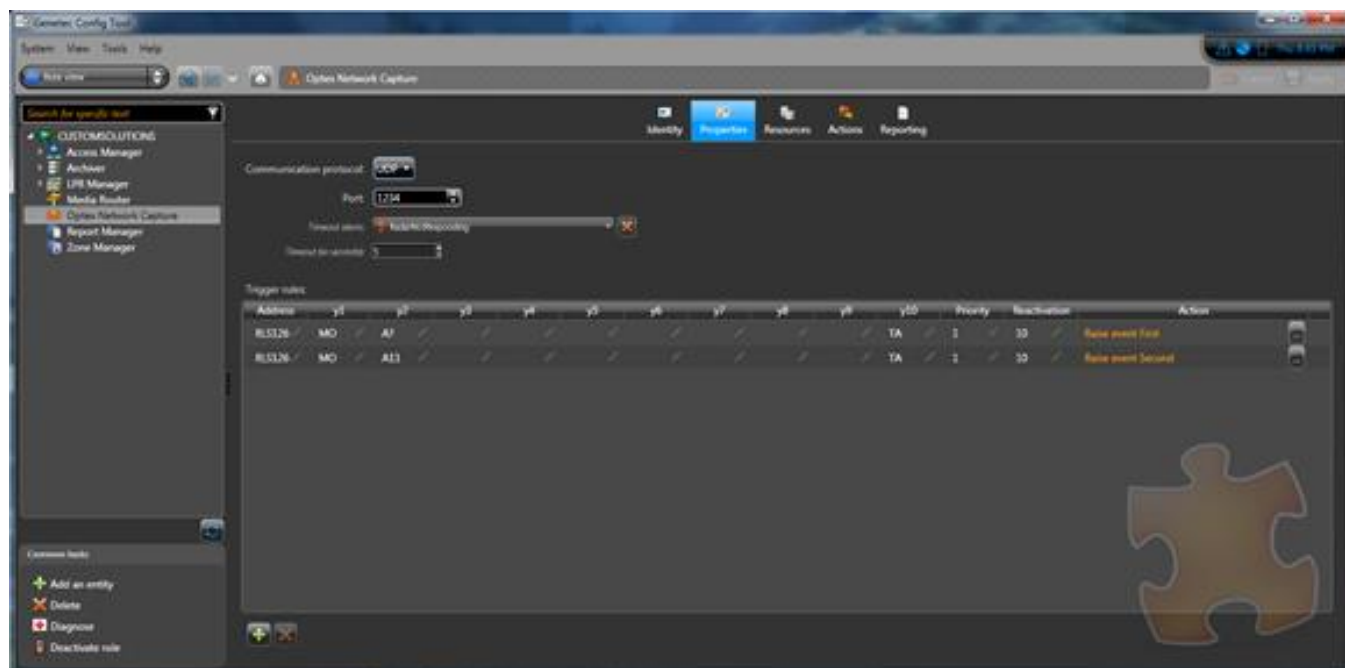
5 Configuring the plugin

5.1 General properties page

In this page the administrator can configure the information used to connect to the Redscan device. This information will be used by the plugin to connect to the Redscan device.

Note: only admins can access to this page in the Config tool

- From Config tool, open the role view and select the Optex Network Capture plugin
- Select the “Properties” tab



Property tab in Config Tool

In the *Property* tab, the following properties are available for configuration

Property	Description
Communication Protocol	TCP/IP or UDP protocol
Port	Port used to connect to the device
Timeout alarm	Selected alarm entity to raise when the radar does not receive data anymore.
Timeout (in seconds)	Delay in seconds before the system raise the timeout alarm if it does not received data anymore (default =5 seconds, minimum value = 3 seconds)
Trigger rules	Pattern for which a predefined action will be triggered (Explained in detail later in the document)

5.2 Trigger rules

Once the plugin is successfully connected to the Redscan device, it starts listening for incoming data. When the plugin receives data from the device, it will look in the list of rules for any rule that matches the data received. In case of a match, it will proceed to execute the rule with the highest priority.

Note that many rules can share the same priority, in which case they will all be executed

5.2.1 Information received from the device

Property	Command	Description
Address	XXXXXX	ID number of the unit consisting of 6 bytes as follows : RLS + 3 bytes representing the last groups of the host IP address. Ex :RLS126 This is a RLS-3060SH unit with the IP address setup as xxx.xxx.xxx.126
Y1	MO	Master alarm condition
Y2	A11-B22	Latest detection indication in either A11, A12, A21, A22, B11, B12, B21 or B22 (for 8 zones configuration)
	A1-B2	Latest detection indication in either A1, A2, B1 or B2
Y3	AA-BB	Detection in multiple detection segments (Combination) Ex: BB : 2 targets in area B1 and B2
Y4	CC	Detection in multiple detection segments (either combination)
Y5	DQ	Disqualification circuit activates
Y6	AR	Anti-rotation function activates
Y7	AM	Anti-masking function activates
Y8	TR	Sensor error condition
Y9	SO	Dirt on the laser window (self-checking function)
Y10	TA	Tamper circuit activates

5.2.2 Special characters

a) ? Character

Use this character as a single character wild character

Ex: if y2 is set to *A1?* Either *A11* or *A12* will successfully match the pattern

b) * Character

Any data contained in this property will be considered a match

c) Space character

Some properties (Y1 to Y 10) might contain empty character, meaning that the flag has not been raised. If you want to match this particular case, use an space character

5.2.3 Priority

The priority will decide which actions should be more important. If 2 mappings have the same priority, both actions will be triggered.

5.2.4 Reactivation

The reactivation is the time in seconds between receiving the same mapping and re-triggering the action.

5.2.5 Trigger actions

These are the following action that can be triggered

Property	Description
Trigger alarm	Trigger the selected alarm
Trigger custom event	Raises the selected custom event.
Go to PTZ Preset	Send the command to move a PTZ camera to the selected preset

5.3 Selecting the server that hosts the plugin

The Security Center plugin architecture allows administrators to choose in which computer the plugin runs. This can be accomplished by choosing the computer from the Resources tab. For more information on how to do this, please check “Move a role to a different server” topic in the Security Center 5.x Administrator Guide

6 Assumptions

- Security Center 5.2 is required for this solution
- Supported readers are the following one :
 - OptexPIE-1 (PoE)
 - RLS-3060SH
 - RLS-3060L
 - RLS-3060
 - RBM-60/100/200/QN-IP
 - RLS-2020
- Certificate is required for each client installing the optex solution (GSC-CUSTOM-OPTEXREDSOINT)

7 Licenses

This is the license used in the solution

- GSC-CUSTOM-OPTEXREDSKANINT

8 Troubleshooting

8.1 Log files

The solution records into a log file. The file is located on a folder called Genetec.CS.Optex.txt under the GSC 5.x installation folder from the computer running the plugin.

9 Contacting Professional Services

Please contact:

Anne-Cécile Tournier
Custom Solutions Project Manager
slevy@genetec.com