

# Restricted Security Area (RSA) Surveillance

## Genetec Security Center RSA Surveillance add-on

With vast and expansive areas to protect, airports present unique security and operational challenges. Being able to expand coverage all the way to the airport's perimeter to identify normal or suspicious activity is critical to the security of any airport, large or small. Wide area RSA surveillance technology, such as indoor and outdoor laser detection devices, help you extend coverage and rapidly geo-locate activity around the tarmac and other restricted areas.

Through its RSA Surveillance module, the Genetec Security Center unified platform integrates with a growing array of RSA technology and devices, such as laser-based solutions. This allows you to detect potential threats across wide areas to strengthen tarmac, aircraft, traveler, and staff security. Automatically tracked on geographical maps, moving targets are intuitively displayed so that airport security personnel assess and respond to threats in less time.

### Applications:

Unified Security - Video Surveillance ·  
Access Control

### Key benefits

---

Unify RSA Surveillance with airport access control and video security solutions

---

Augment security and ensure complete coverage all the way to the airport's perimeter

---

Geo-locate and track all perimeter activity from ground staff, interior events, or potential threats

---

Visualize moving targets on dynamic airport maps for enhanced situational awareness

---

With more information on hand, dispatch staff to neutralize threats more efficiently

---

## Sample applications



### Unified airport security

Traditionally managed as standalone systems, laser-based detection systems can now be unified with the rest of the airport security infrastructure managed by Security Center. Delivering a comprehensive strategy that offers multiple layers of security from curb side to the perimeter fence, airports reach new levels of awareness and responsiveness.

Airport security personnel monitor and run reports within Security Center, the same interface that allows them to monitor video cameras, physical access control, and vehicle movement. You neutralize threats faster by viewing RSA Surveillance events linked to multiple security cameras, and run investigations by reviewing archived footage tied to RSA Surveillance activity.

---

## Supported hardware



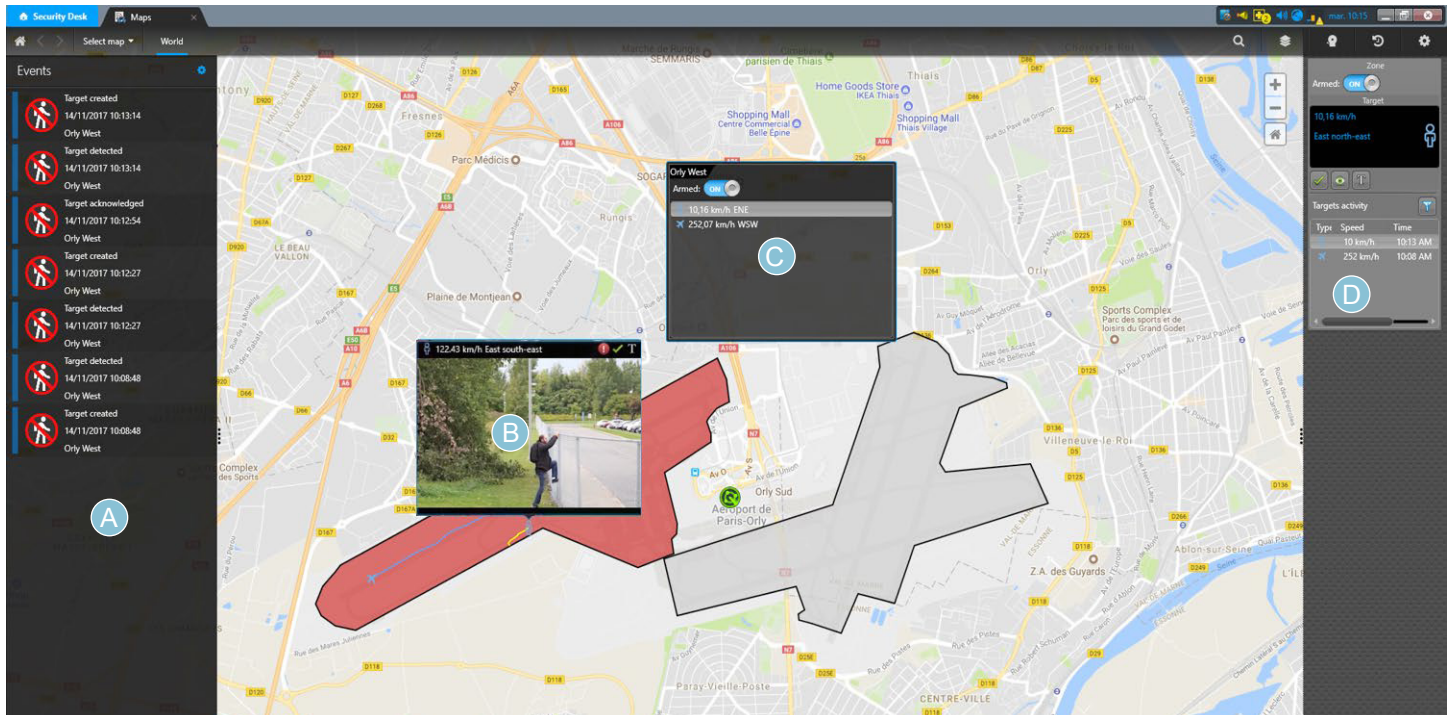
**RLS-3060L, RLS-3060SH, RLS-2020i, RLS-2020S**

## How it works

Through the RSA Surveillance module, Security Center connects to your laser detection system over the airport's security network. Your RSA system synchs events and alarms in real-time with Security Center, so your operators are instantly aware of any activity or threat. Potential threats are handled directly in the alarm management task or maps of the airport.

By automatically synchronizing RSA intrusion areas, you introduce a new layer of information and command & control capabilities on Security Center maps. Personnel can arm or disarm RSA intrusion areas, visually monitor activity, and view live or recorded video associated with each target. They acknowledge intrusion alarms on a map, and use reporting tasks for focused investigations.

You can easily add RSA Surveillance devices to your Genetec security system using the Security Center configuration interface. Automatically import multiple intrusion zones from the devices and add them to the maps. Once imported, detection zones become another layer on the Security Center dynamic maps and can be armed and disarmed on schedule.



- A** Monitor RSA surveillance events in real-time
- B** View live video associated to RSA surveillance devices
- C** Arm/disarm zones, track moving targets with speed and directional information directly on a map
- D** Monitor and arm/disarm zones through the intuitive widget in the dashboard

## Ordering information

Part	Description
GSC-GAP-RSA-BASE	RSA Surveillance Base Package (Mandatory). Only available with Pro or Enterprise editions (Security Center Synergis™ and/or Security Center Omnicast™).
GSC-PM-GAP-RSA	RSA Surveillance Advanced Package to enable surveillance within a map view. Requires Plan Manager Advanced and Genetec Advantage.
GSC-GAP-RSA-1LAS	One (1) Laser device connection.

Supported Versions:  
Security Center 5.6 SR1  
and later

**Genetec Inc.**  
[genetec.com/locations](http://genetec.com/locations)  
[info@genetec.com](mailto:info@genetec.com)  
[@genetec](https://www.facebook.com/genetec)

© Genetec Inc., 2018. Genetec and the Genetec Logo are trademarks of Genetec Inc., and may be registered or pending registration in several jurisdictions. Other trademarks used in this document may be trademarks of the manufacturers or vendors of the respective products.



800.966.7839  
[sales@optexamerica.com](mailto:sales@optexamerica.com)  
[www.optexamerica.com](http://www.optexamerica.com)



facebook.com/optexamerica



@optexamerica



linkedin.com/company/optex